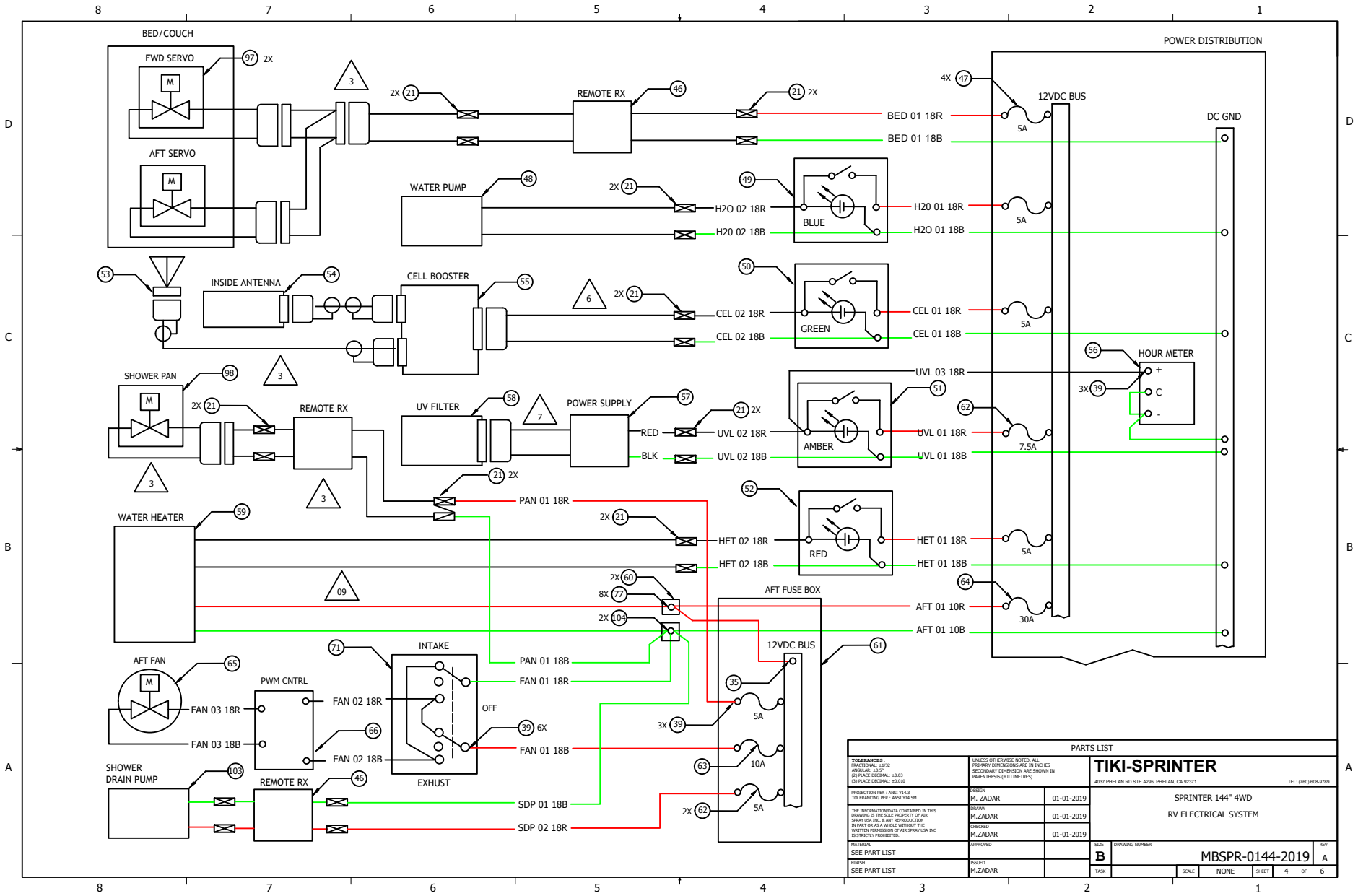


ALL JUMPERS
00 AWG UOS

RED JUMPERS
01 THRU 16
25 THRU 27

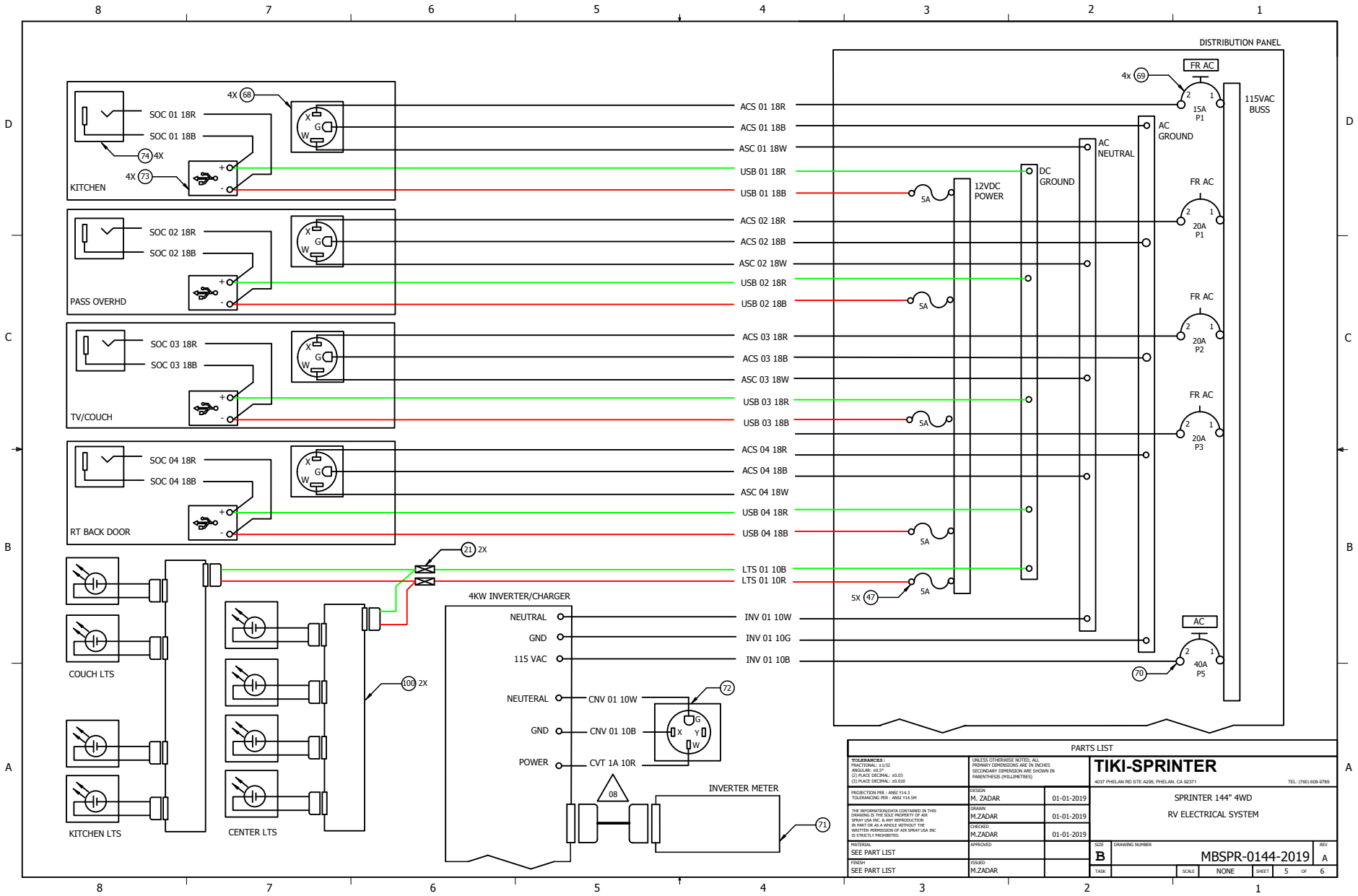
BLACK JUMPERS
17 THRU 24

TOLERANCES:		UNLESS OTHERWISE NOTED, ALL DIMENSIONS ARE IN INCHES		TIKI-SPRINTER	
(1) FRACTIONAL: 1/16	(2) DECIMAL: .0150	DESIGN:	M.ZADAR	DATE:	05-28-2022
(3) PLACE DECIMAL: .0150	(4) PLACE DECIMAL: .0150	DRAWN:	M.ZADAR	DATE:	05-28-2022
PRODUCTION PER: ANS I 14.3		CHECKED:	M.ZADAR	DATE:	05-28-2022
TOLERANCE PER: ANSI 14.3		ISSUED:		DATE:	
THE INFORMATION CONTAINED IN THIS DRAWING IS THE SOLE PROPERTY OF TIKI-SPRINTER, INC. AND REPRODUCTION IN PART OR AS A WHOLE WITHOUT THE WRITTEN PERMISSION OF TIKI-SPRINTER, INC. IS EXPRESSLY PROHIBITED.		REVISED:		DATE:	
SEE PART LIST		ISSUED:		DATE:	
SEE PART LIST		ISSUED:	M.ZADAR	DATE:	
PARTS LIST				DRAWING NUMBER	
SPRINTER 144" 4WD				REV	
RV ELECTRICAL SYSTEM				A	
MBSPR-0144-2019				SHEET 2 OF 6	

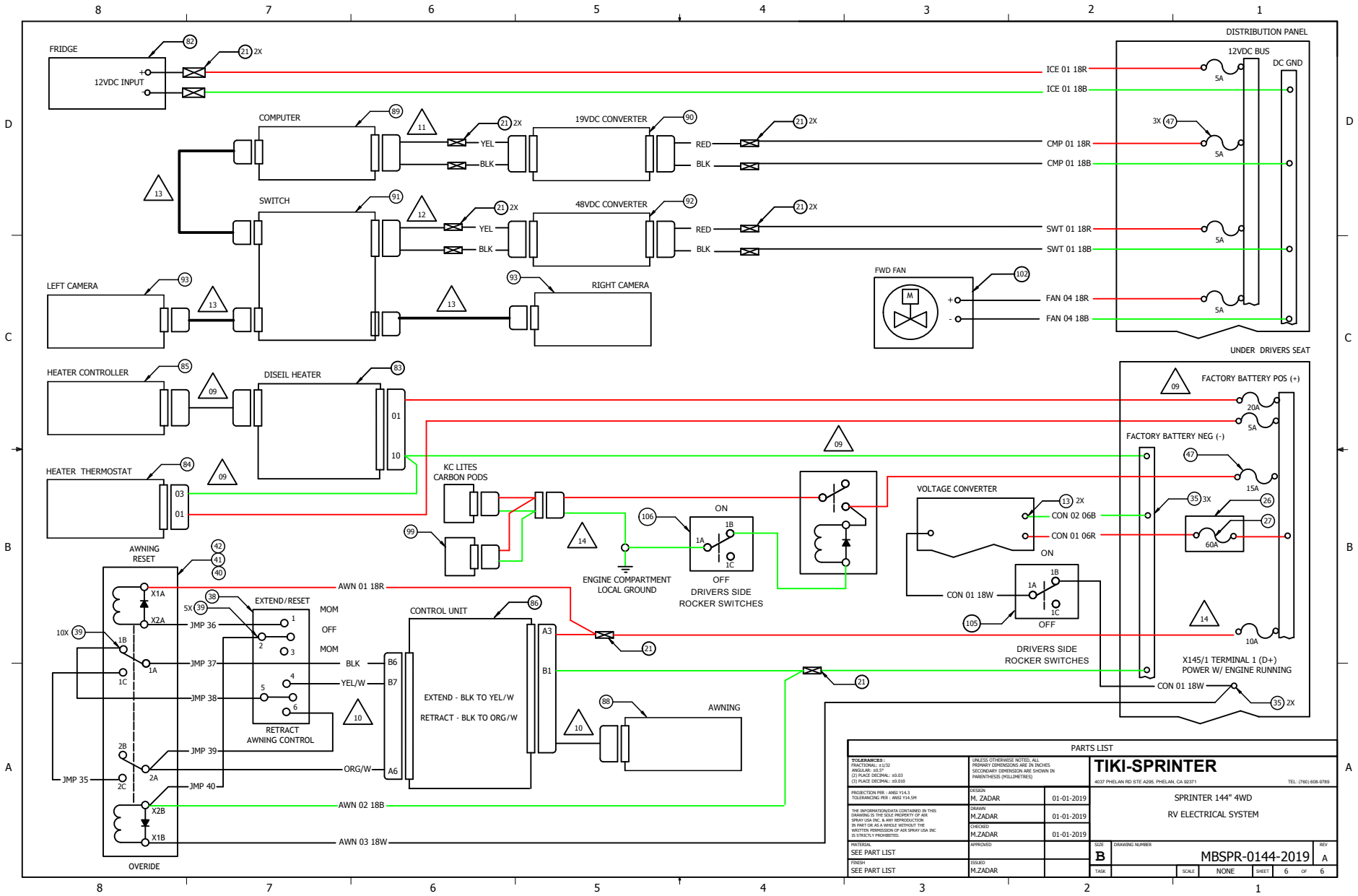


TOLERANCES:		UNLESS OTHERWISE NOTED, ALL DIMENSIONS ARE IN INCHES		TIKI-SPRINTER	
FINISH:	AS SHOWN	ANGLE:	30, 45, 90	4837 PHELAN RD STE A206, PHELAN, CA 92374 TEL: (760) 608-0789	
PROJECTION:	1ST ANGLE	DECIMAL:	0.001	DESIGN:	M.ZADAR 01-01-2019
PROJECTION FOR:	ANSI Y14.3	PLACEMENT:	0.001	DRAWN:	M.ZADAR 01-01-2019
THIS DRAWING/SCHEMATIC CONTAINS THE PROPERTY OF TIKI-SPRINTER, INC. ANY REPRODUCTION IN PART OR AS A WHOLE WITHOUT THE WRITTEN PERMISSION OF TIKI-SPRINTER, INC. IS STRICTLY PROHIBITED.		CHECKED:	M.ZADAR 01-01-2019	ISSUED:	
SEE PART LIST		ISSUED:		SCALE:	NONE
ISSUED:	M.ZADAR	TASK:		SHEET:	4 OF 6

PARTS LIST		TIKI-SPRINTER	
SPRINTER 144" 4WD		RV ELECTRICAL SYSTEM	
REV	A	DRAWING NUMBER	MBSPR-0144-2019



TOLERANCES:		UNLESS OTHERWISE NOTED, ALL DIMENSIONS ARE IN INCHES		TICI-SPRINTER	
FRACTIONAL: 1/16	ANGULAR: 30.5°	PRIMARY DIMENSIONS ARE IN INCHES	SECONDARY DIMENSIONS ARE SHOWN IN PARENTHESES (MILLIMETERS)	4051 PHELAN RD STE A206, PHELAN, CA 92371	TEL: (760) 608-0789
(1) PLACE DECIMAL: .010					
PRODUCTION PER: ANS I 14.3	TOLERANCING PER: ANSI Y14.4M	DESIGN: M.ZADAR	01-01-2019	SPRINTER 144" 4WD	
THIS DRAWING/DOCUMENT IS THE PROPERTY OF MZADAR INC. AND REPRODUCTION IN PART OR AS A WHOLE WITHOUT THE WRITTEN PERMISSION OF MZADAR INC IS EXPRESSLY PROHIBITED.		DRAWN: M.ZADAR	01-01-2019	RV ELECTRICAL SYSTEM	
REVISED: SEE PART LIST	APPROVED: M.ZADAR	CHECKED: M.ZADAR	01-01-2019	SIZE: B	DRAWING NUMBER: MBSPR-0144-2019
ISSUED: M.ZADAR				TASK:	REV: A
				SCALE: NONE	SHEET: 5 OF 6



PARTS LIST			
TOLERANCES: FRACTIONAL: 1/16 ANGULAR: 30.5° (1) PLACE DECIMAL: 0.01 (2) PLACE DECIMAL: 0.005		UNLESS OTHERWISE NOTED, ALL DIMENSIONS ARE IN INCHES. DIMENSIONS IN PARENTHESES (MILLIMETERS)	
PRODUCTION PER: ANL14-3 (1) PLACE DECIMAL: 0.005		DESIGN: M.ZADAR	01-01-2019
THE INFORMATION CONTAINED IN THIS DRAWING IS THE SOLE PROPERTY OF ANL SPRING, INC. & ANY REPRODUCTION IN PART OR AS A WHOLE WITHOUT THE WRITTEN PERMISSION OF ANL SPRING, INC. IS EXPRESSLY PROHIBITED.		DRAWN: M.ZADAR	01-01-2019
TESTER: SEE PART LIST		CHECKED: M.ZADAR	01-01-2019
FINISH: SEE PART LIST		ISSUED: M.ZADAR	01-01-2019
REV A		DRAWING NUMBER MBSPR-0144-2019	
SCALE NONE		SHEET 6 OF 6	

TIKI-SPRINTER
 4037 PHELAN RD STE A206, PHELAN, CA 92374 TEL: (760) 608-0789
SPRINTER 144" 4WD
RV ELECTRICAL SYSTEM