

05 74	DGDYA-MXR2T-0001	12VDC SOCKET	MUZHI	AZ	
05 73	MG001031-B	USB JACK	MGOOICI	AZ	
01 72	43239-241524	50A RV RECEPTAL	LEASURE RV	AZ	
01 71	PICOGLFREMOFTE	INVERTER METER	AIMS	AZ	
01 70	BR140	40A CIRCUIT BREAKER	CUTLER HAMMER	AZ	
01 69	BR120	20A CIRCUIT BREAKER	CUTLER HAMMER	HD	
04 68	5-2OR	115VAC SOCKET	NEMA	HD	
01 67	89-4008	FAN SWITCH	G&C SYSTEMS B.V.	OEM	
01 66	30-3004	FAN POWER CONTROLLER	G&C SYSTEMS B.V.	OEM	
01 65	LE MANS	FAN	G&C SYSTEMS B.V.	OEM	
01 64	ATC-30	MINI FUSE 30A	ATC	AZ	
01 63	ATC-10	MINI FUSE 10A	ATC	AZ	
01 62	ATC-7.5	MINI FUSE 7.5	ATC	AZ	
01 61	4WAY-FUSEB-YFRD	AFT FUSE BOX	BUNKER INDUST	AZ	
01 60	180-00003-00	TERMINAL BLOCK	ADVANCE MC	AZ	
01 59	DUO-10	WATER HEATER	MERCURY RV	AZ	
01 58	S2Q-P/12VDC	LIV LIGHT	VIQJIA	OEM	
01 57	BA-RO/P/12	LIV POWER SUPPLY	VIQJIA	OEM	
01 56	8523755281	HOURLMETER	JAYRON	AZ	
01 55	470059	CELL BOOST RECEIVER	WEBOOST	OEM	
01 54	311239	CELL BOOST INSIDE ANT	WEBOOST	OEM	
01 53	314445	CELL BOOST OUTSIDE ANT	WEBOOST	OEM	
01 52	KCD2-102N-R	RED SWITCH	MXUTEUK	AZ	
01 51	KCD2-102N-A	AMBER SWITCH	MXUTEUK	AZ	
01 50	KCD2-102N-G	GREEN SWITCH	MXUTEUK	AZ	
01 49	KCD2-102N-B	BLUE SWITCH	MXUTEUK	AZ	
01 48	BYT-7A108	WATER PUMP	BAYITE	AZ	
01 47	ATM 5A	MINI FUSE 5A	ATM	AZ	
02 46	XL5242MO	REMOTE MODULE	EMYLO	AZ	
02 45	PA-14P-40-50	SOLAR PANEL ACTUATOR	PROGRESSIVE AUTO	AZ	
02 44	7277-2-7.5	7.5A CIRCUIT BREAKER	KLIXON	AZ	
02 43	M81824/1-3	YELLOW MINI SEAL	TE CONNECTIVITY	AZ	
02 42	SR3P-06F3	RELAY SPRING	IDEC	MR	
02 41	SR3P-05	RELAY SOCKET	IDEC	MR	
02 40	RR2KP-UDC12V	RELAY	IDEC	MR	
11 39	640174-1	18 AWG SPADE LUG	TE CONNECTIVITY	AZ	
02 38	NGR25481BNAAN	ROCKER SWITCH MOM	ITT CANNON	AZ	
08 37	MC4	SOLAR CONNECTORS	NEWARK	AZ	
04 36	VBNH3305A16	SOLAR PANELS	PANISONIC	OEM	
16 35	1-32454-0	18 AWG TERMINAL LUG #10	TE CONNECTIVITY	AZ	
02 34	7277-5-15	15A CIRCUIT BREAKER	KLIXON	AZ	
01 33	HUB-1	SOLAR METER HUB	MORNINGSTAR	MS	
01 32	TS-M-2	SOLAR METER	MORNINGSTAR	MS	
01 31	PICOGLF40W12V120V	INVERTER CHARGER	AIMS	AZ	
01 30	WF-8930-50	POWER DISTRIBUTION	WFCO	AZ	
01 29	DC1212-60	VOLTAGE CONVERTER	RENOGY	RE	
02 28	TRISTAR-60	SOLAR CONTROLLER	MORNINGSTAR	MS	
05 27	MAX-60	60A FUSE	BUSSMANN	AZ	
06 26	01520001TXN	MAXI FUSE HOLDER	LITTLEFUSE	NE	
10 25	52041-1	8 AWG 1/4 TERMINAL LUG	TE CONNECTIVITY	AZ	
03 24	M8R2X030A045	60A DIODE ASSEMBLY	GENESIC	AZ	
05 23	321869	00 AWG 1/4 TERMINAL LUG	TE CONNECTIVITY	AZ	
01 22	MBRT40020R	400A DIODE ASSEMBLY	GENESIC	AZ	
30 21	M81824/1-2	BLUE MINI SEAL	TE CONNECTIVITY	AZ	
01 20	1577635-1	BLUE 5/16 TERMINAL LUG	TE CONNECTIVITY	AZ	
01 19	ABC-1-R	1A BARREL FUSE	EATON BUSSMANN	AZ	
01 18	92AH1076	IN-LINE FUSE HOLDER	EATON BUSSMANN	AZ	
01 17	P/O RBM500-US	BATTERY MONITOR/METER	RENOGY	AZ	
01 16	RBM500-US	BATTERY SHUNT	RENOGY	AZ	
01 15	52291-4	8 AWG 5/16 TERMINAL LUG	TE CONNECTIVITY	AZ	
AR 14	THHN8BLK	8 AWG WIRE BLK	STOCK WIRE	AZ	
AR 13	THHN8RED	8 AWG WIRE RED	STOCK WIRE	AZ	
01 12	B5EA6007B	DUAL BATTERY SWITCH	BLUE SEA SYSTEM	AZ	
01 11	ANL-350	350A FUSE	BLUE SEA SYSTEM	AZ	
01 10	B55-5503	LARGE FUSE HOLDER	BLUE SEA SYSTEM	AZ	
02 09	321873	00 AWG 1/2 TERMINAL LUG	TE CONNECTIVITY	AZ	
03 08	HS4-30	HEAT SHRINK BLK PER FT	THOMAS & BETTS	AZ	
03 07	HS4-30R	HEAT SHRINK RED PER FT	THOMAS & BETTS	AZ	
30 06	321870	00 AWG 5/16 TERMINAL LUG	SOLISTRAND	AZ	
AR 05	26121500B	00 AWG WIRE BLK	49000000	AZ	
AR 04	26121500R	00 AWG WIRE RED	49000000	AZ	
02 03	4S12V200	BATTERY BMS	LYNX	LB	
02 02	LB12V100P	BATTERY PRISMATIC	LYNX	LB	
04 01	LB12V100E	BATTERY ENCASED	LYNX	AZ	

GENERAL NOTES:

- SOLAR CONTROLLERS, HUB AND METER INSTALLED IAW MORNINGSTAR TRISTAR DOC. MS-001156 V4.4
- SOLAR CONTROLLERS REPROGRAMMED FOR LITHIUM BATTERIES IAW MORNINGSTAR DOC. MS-002938 V3.3
- VOLTAGE CONVERTER INSTALLED IAW RENOGY DC1212-204060 MANUAL
- BATTERY MONITOR INSTALLED IAW RENOGY RBM500 MANUAL
- INVERTER CHARGER AND METER INSTALLED IAW AIMS POWER DOC. PICOGLF10W-PICOGLF60W
- DISTRIBUTION PANEL INSTALLED IAW WFCO MANUAL CD-M-00004-6
- LIFT INSTALLED IAW HYDRALIFT MANUAL 4244874-STD-INSTALLATION-MANUAL 0516
- CARBON POD LIGHTS INSTALLED IAW KCLITES #615-RELAY WIRE HARNESS DOCUMENT
- BATTERY THERMOSTAT INSTALLED IAW WEEWOODAY ENCLOSED DIAGRAM
- SOLAR PANEL ACTUATORS INSTALLED IAW PROGRESSIVE AUTOMATION DATA SHEET PA-15P
- BED/COUCH & SHOWER PAN ACTUATOR INSTALLED IAW WINDYINATION ACTUATOR WIRELESS CONTROLLER USER MANUAL
- CELL BOOSTER INSTALLED IAW WEBOOST MANUAL GB00354 REV 1
- LIV LIGHT INSTALLED IAW VIQJIA OWNERS MANUAL 520104 REV AC
- WATER HEATER INSTALLED IAW MERCURY RV WATER HEATER DUO-10/AQU-10 MANUAL DATED 21/12/21
- FAN INSTALLED IAW G&C SYSTEMS ROOFTOP VENTILATOR TECHNICAL DETAILS 1
- INTERNAL VENTILATION VALVE V12 INSTALLED IAW G&C SYSTEMS INTERNAL VALVE TECHNICAL DETAILS 2
- FAN CONTROL INSTALLED IAW G&C SYSTEMS ROOFTOP VENTILATORS TECHNICAL DETAILS 8
- AFT FUSE BOX INSTALLED IAW BUNKER INDUSTRIES ENCLOSED PRODUCT DETAILS
- HOURLMETER INSTALLED IAW JAYRON ENCLOSED INSTRUCTIONS
- INTERIOR LIGHTS INSTALLED IAW WORTON ENCLOSED INSTRUCTIONS
- DIESEL HEATER INSTALLED IAW EBERSPACHER MANUAL 252361909767
- AWNING INSTALLED IAW FLAMMA 165 EAGLE MANUAL AD 15 98690-074 REV P
- FWD FAN INSTALLED IAW CAFRAMO MANUAL 7012MN001 REV 00

CONF/ QTY	ITEM NO.	PART NUMBER	DESCRIPTION	VENDOR	SOURCE/NOTES
	AR 108	AMW-318	18 AWG WIRE BLACK	OEM	HD
	AR 107	AMW-328	18 AWG WIRE RED	OEM	HD
	01 106	907 905 55 02	SWITCH AUX LIGHTS	MERCEDES BENZ	OM
	01 105	907 905 13 05	SWITCH CONVERTER ON/OFF	MERCEDES BENZ	OM
	02 104	320569	YELLOW 1/4 TERMINAL LUG	AMP	AZ
	01 103	XX328	WATER PUMP	BAYITE	AZ
	01 102	1012CABBX	SIROCCO II BLACK	SEEK/CAFRAMO	AZ
	01 101	H61901A2-1	LED STRIP LIGHT 16 FT	GOVEE	AZ
	01 100	WRTO01	LED PUCK LIGHTS 4 EA	WORTON	AZ
	02 99	96422	CARBON POD 70W HD	KC LITES	OEM
	01 98	ACT-2PCS30IN	SHOWER PAN ACTUATOR	WINDYNATION	AZ
	02 97	ACT-2PCS12IN	COUCH/BED ACTUATOR	WINDYNATION	AZ
	03 96	ARC-10	10A FUSE	ATC	AZ
	08 95	Y76134	HEATING PADS	GAOHOJ	AZ
	02 94	X042	THERMSTAT	WEEWOODAY	AZ
	02 93	M7D77-POE	CAMERA	MICROSEVEN	AZ
	01 92	S12D48K144Z	48VDC CONVERTER	DOW	AZ
	01 91	G5108PEV3	NETWORK SWITCH	NETGEAR	AZ
	01 90	12-19-285W	19VDC CONVERTER	KNACRO	AZ
	01 89	NUCS1RYH	COMPUTER	INTEL	AZ
	01 88	07755C01R	AWNING	FLAMMA	OEM
	01 87	98655-950	AWNING SWITCH	FLAMMA	OEM
	01 86	98655-994	AWNING CONTROLLER	FLAMMA	OEM
	01 85	225101004103	HEATER CONTROL UNIT	ESPARSPACHER	HS
	01 84	221000341300	HEATER THERMOSTAT	ESPARSPACHER	HS
	01 83	252361050000	D5 DIESEL HEATER	ESPARSPACHER	HS
	01 82	D607898	FRIDGE	NORCOLD	AZ
	02 81	MS23224-1	SWITCH GUARD RED	EATON	AZ
	02 80	MS35059-22	SWITCH SPST	EATON	AZ
	AR 79	THHN6BLK	6 AWG WIRE BLK	STOCK WIRE	AZ
	AR 78	THHN6RED	6 AWG WIRE RED	STOCK WIRE	AZ
	01 77	CFLUG-06AG-38	6 AWG 5/16 TERMINAL LUG	WINDYNATION	AZ
	04 76	49-340	ANDERSON CONNECTOR	PHILMORE	AZ
	01 75	402475	LIFT	HYDRALIFT	OEM

- BATT 1 +12VDC (006)
- BATT 1 +12VDC (102)
- BATT 2 +12VDC (030)
- BATT 2 -12VDC (125)
- RV PWR +12VDC (001)
- RV GND -12VDC (003)
- SOURCE +12VDC (235)
- SOURCE -12VDC (125)
- MOTOR CNTRL OUT (204)
- MOTOR CNTRL IN (154)
- SOLAR PANEL + (244)
- SOLAR PANEL - (154)

N/A	DWG FILE NAME LOCATION
DASH NO.	USED ON
	APPLICATION

VENDOR LIST

- HS HEATSO  
OEM ORIGINAL MANUFACTURER  
HD HOME DEPOT  
MR MOUSER  
RE RENOGY  
NE NEWARK  
LB LYNX BATTERIES  
AZ AMAZON
- CIRCUITS  
SPA SOLAR PANEL ARRAY  
SPM SOLAR PANEL MOTOR  
SCN SOLAR CONTROLLER UNIT  
SCN SOLAR CONTROLLER NETWORK  
SCD SOLAR CONTROLLER DISPLAY  
MCS MOTOR CONTROL SYSTEM  
INV INVERTER  
UCD USB C DUAL  
CLS CIGARETTE LIGHTER SOCKET  
ACS 115 VAC SOCKET  
ACP 115 VAC PLUG (EXTERNAL POWER)  
MSP MAIN BATTERY POWER  
ABP AUX BATTERY POWER  
PAN FAN SYSTEM  
FAN SHOWER PAN ACTUATOR  
VDC VEHICLE DC  
CDC CHARGER DC  
ICE FRIDGE  
HTR HEATER  
CMP COMPUTER  
SWT SWITCH/ROUTER  
GND GROUND
- 01 PART OF BATTERY SHUNT HARNESS  
02 PART OF IN-LINE FUSE HOLDER  
03 PART OF ACTUATOR WIRE HARNESS  
04 ETHERNET CABLE PART OF HUB KIT  
05 RG6 PART OF CELL BOOSTER KIT  
06 POWER PLUG PART OF CELL BOOSTER KIT  
07 PART OF UV LIGHT WIRE HARNESS  
08 ETHERNET CABLE PART OF INVERTER/CONVERTER KIT  
09 PART OF HEATER WIRE HARNESS KIT  
10 PART OF AWNING WIRE HARNESS KIT  
11 POWER PLUG PART OF COMPUTER POWER SUPPLY  
12 POWER PLUG PART OF SWITCH/ROUTER POWER SUPPLY  
13 ETHERNET CABLE  
14 PART OF KC LITES WIRE HARNESS KIT
- CIRCUIT WIRE & SEQ AWG WIRE COLOR  
EXAMPLE: UUU VV XX YYZ
- UUU CIRCUIT  
VV V WIRE & SEQUENCE  
XX AWG  
Z COLOR

R=RED, B=BLACK & W=WHITE  
YELL/W= YELLOW & WHITE  
ORG/W = ORANGE & WHITE

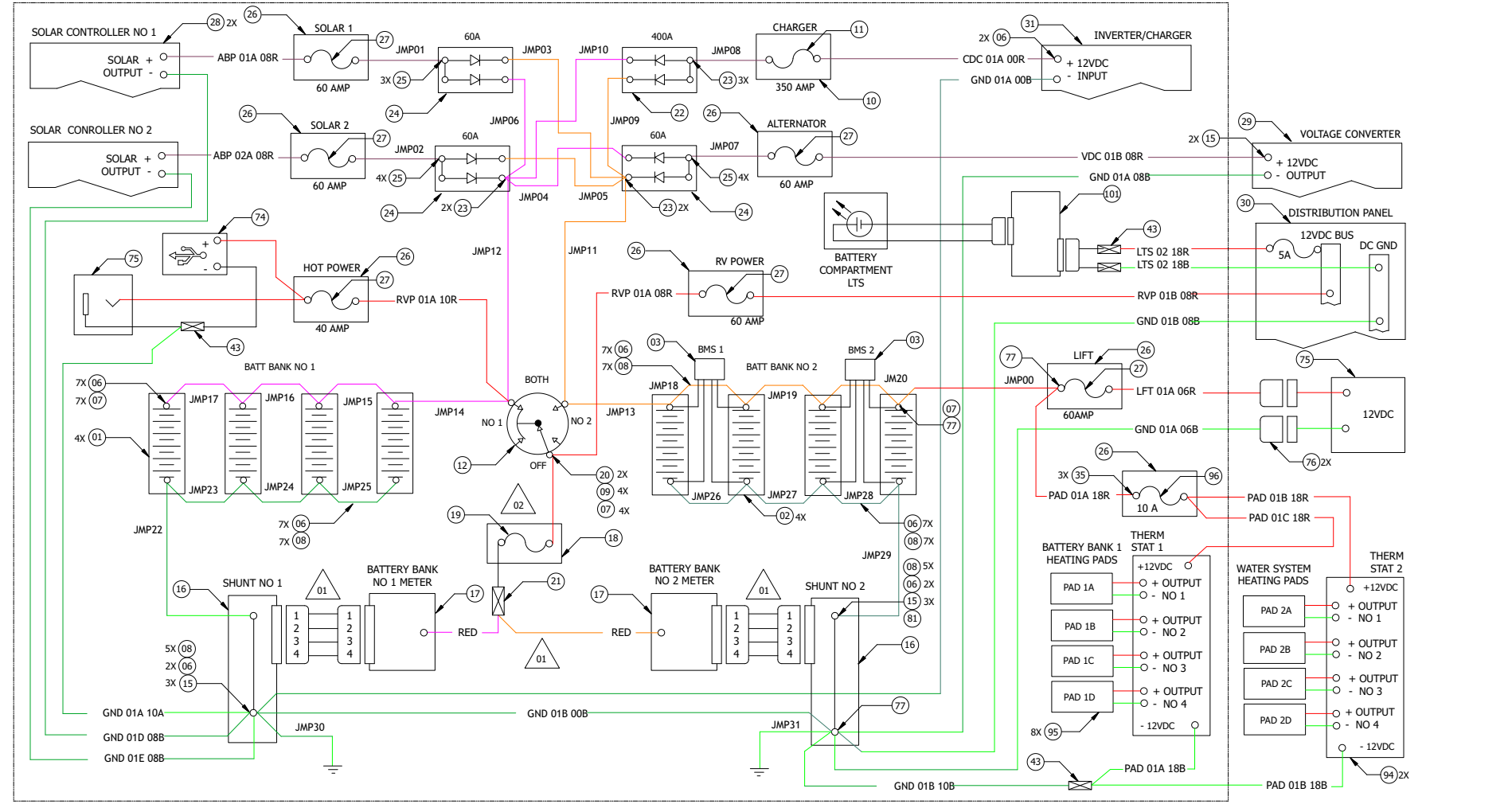
REVISIONS				
ZONE	REV	DESCRIPTION	DATE	APPROVED
	IR	INITIAL RELEASE	20170101	GZADAR
	A	SINGLE BATTERY BANK AND 2 SOLAR PANELS	20210101	GZADAR
	B	DUAL BATTERY BANKS AND 4 SOLAR PANELS	20230723	GZADAR
	C	INTERLOCKS FOR AWNING & SOLAR PANELS	20240501	GZADAR
	D	REDRAWN & CLEAN UP WITH QCAD	20241101	GZADAR

DWG NO. REGISTRATION NO.-DD-MM-YYYY-SEQ NO.

MATERIAL			UNLESS OTHERWISE SPECIFIED		CONTRACT NUMBER		TIKISPRINTER LLC
ALL DIM ARE IN INCHES	TOL	XX .010 XXX .005 ANGLE 2°	DRAWN	CHECK	ENGR	ENGR	Electrical Schematic
INTERPRET DRAWING PER DDD-STD-100 BREAK ALL SHARP EDGES			HFG				
SIZE	DWG NO.	REGISTRATION NO.-DD-MM-YYYY-SEQ NO.	DA	APPD			
SCALE 1/1	WT. NA	SHEET 1 of 6	CAGE CODE				

REVISIONS				
ZONE	REV	DESCRIPTION	DATE	APPROVED

BATTERY COMPARTMENT



JUMPERS

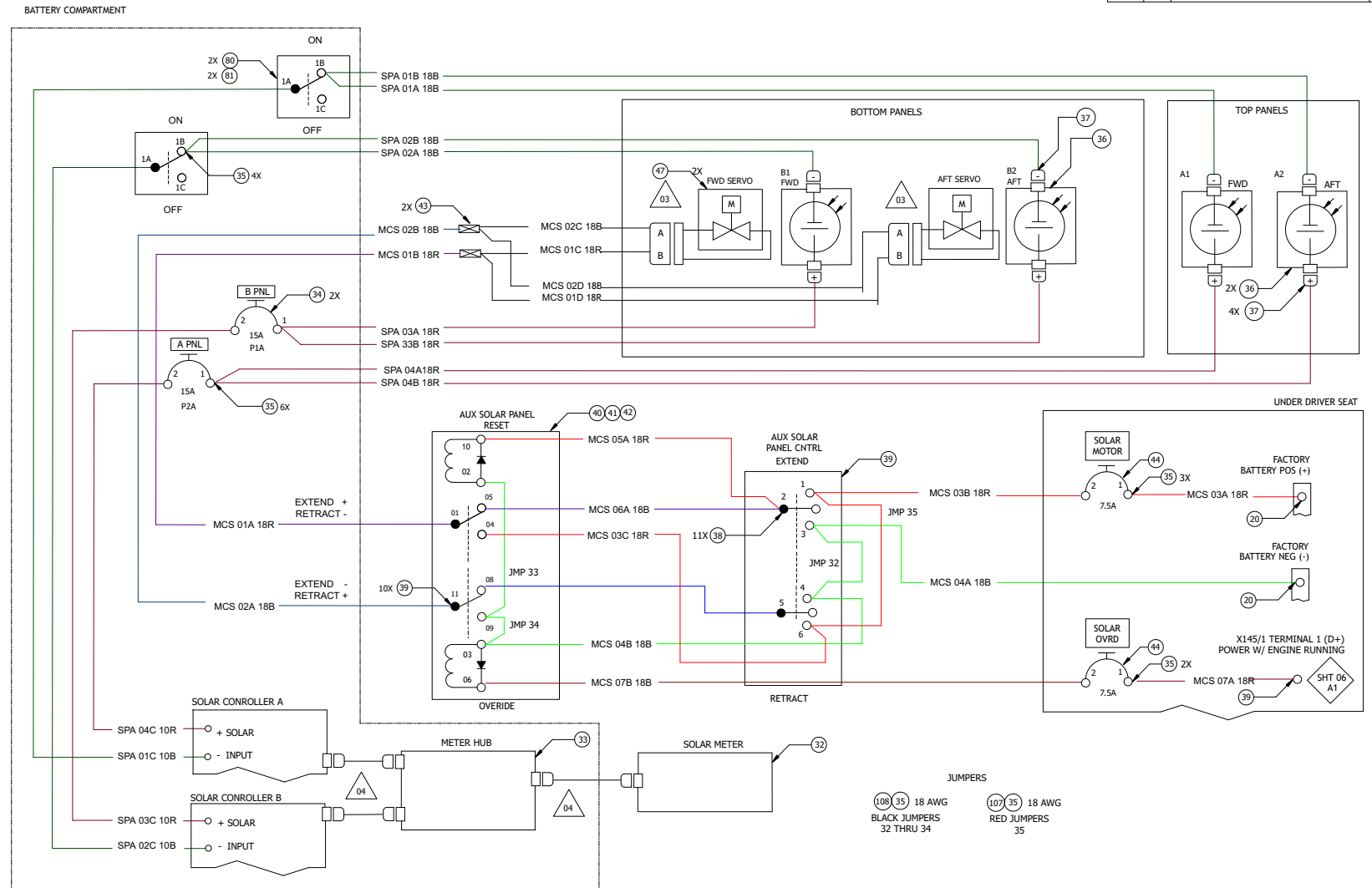
- 06 AWG: 13, 14, 15 (RED JUMPERS 00)
- 08 AWG: 13, 14, 15 (RED JUMPERS 01 THRU 07)
- 00 AWG: 04, 06, 07 (RED JUMPERS 08 THRU 21); 04, 06, 07 (BLACK JUMPERS 22 THRU 31)

N/A	DWG FILE NAME LOCATION
DASH NO.	USED ON
APPLICATION	

MATERIAL	UNLESS OTHERWISE SPECIFIED	CONTRACT NUMBER	TIKISPRINTER
ALL DIM ARE IN INCHES	TOL .xx : .010 .xxx : .005 ANGLE : 2°	DRAWN CHECK ENGR MFG QA APPRO	Electrical Schematic
INTERPRET DRAWING PER 000-STD-100. BREAK ALL SHARP EDGES		CAGE CODE:	SIZE A DWG NO. REGISTRATION NO.-DD-MM-YYYY-SEQ NO
			SCALE 1/1 WT. NA SHEET X OF Y

REG. NO. REGISTRATION NO.-DD-MM-YYYY-SEQ NO

REVISIONS				
ZONE	REV	DESCRIPTION	DATE	APPROVED

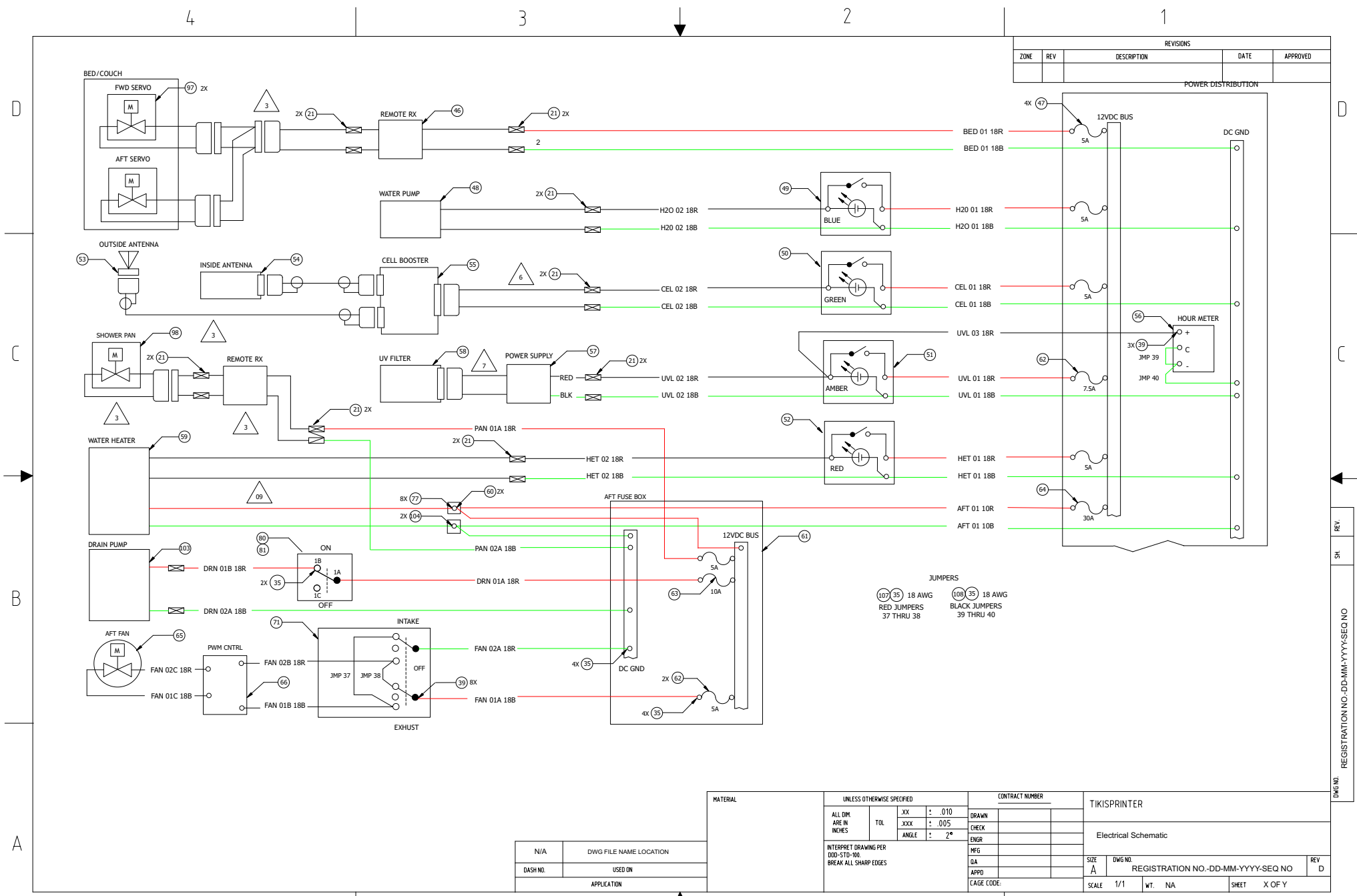


JUMPERS  
 (108)(35) 18 AWG BLACK JUMPERS 32 THRU 34  
 (107)(35) 18 AWG RED JUMPERS 35

N/A	DWG FILE NAME LOCATION
DASH NO.	USED ON
APPLICATION	

MATERIAL	UNLESS OTHERWISE SPECIFIED	CONTRACT NUMBER		TIKISPRINTER	
	ALL DIM. ARE IN INCHES TOL .XX : .010 .XXX : .005 ANGLE : 2° INTERPRET DRAWING PER 000-STD-100 BREAK ALL SHARP EDGES	DRAWN CHECK ENGR MFG QA APPD CAGE CODE:	DRAWN CHECK ENGR MFG QA APPD CAGE CODE:	Electrical Schematic SIZE A DWG NO. REGISTRATION NO.-DD-MM-YYYY-SEQ NO SCALE 1/1 WT. NA SHEET X OF Y	

REGISTRATION NO.-DD-MM-YYYY-SEQ NO

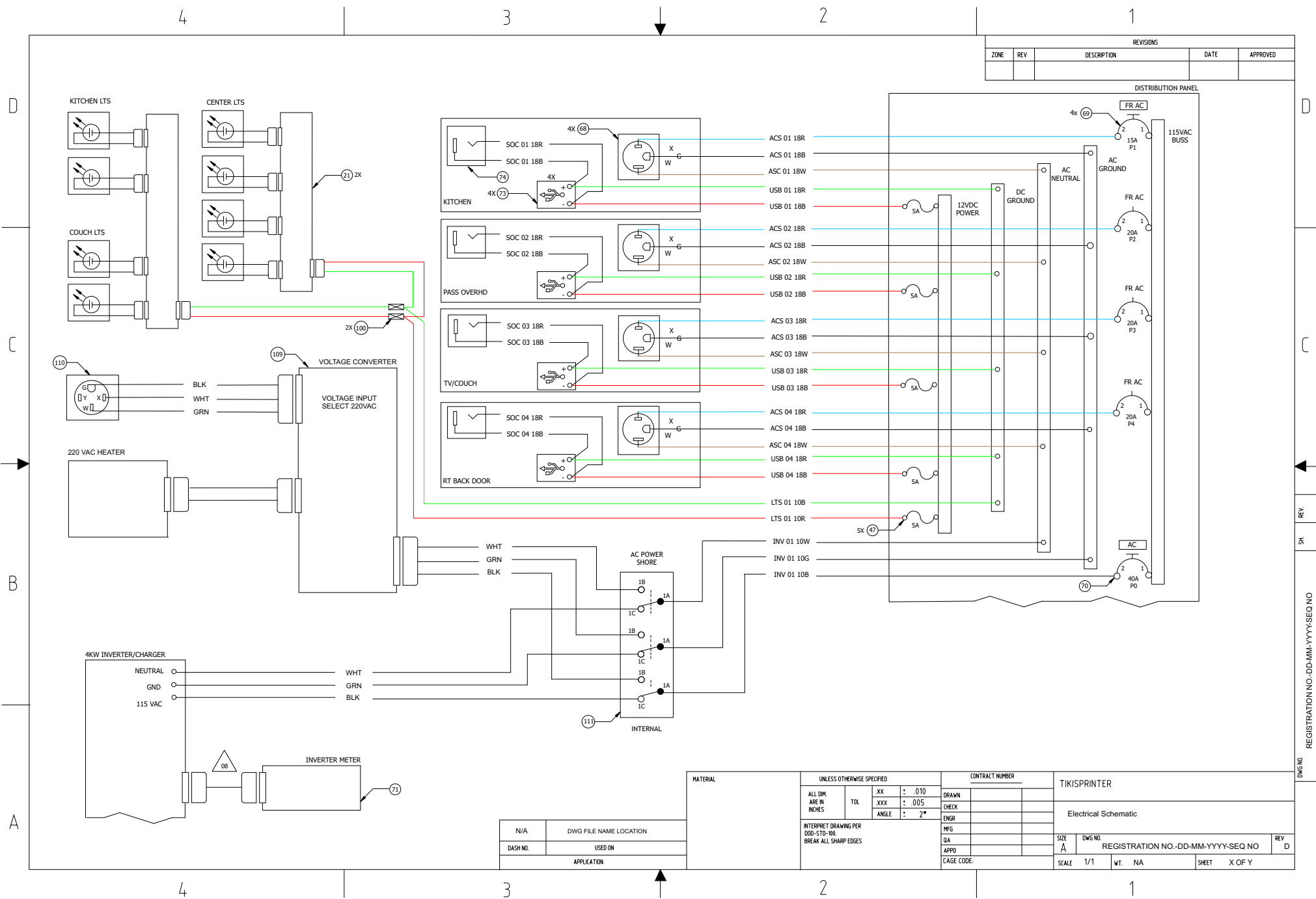


REGISTRATION NO.-DD-MM-YYYY-SEQ NO

N/A	DWG FILE NAME LOCATION
DASH NO.	USED ON
APPLICATION	

MATERIAL		UNLESS OTHERWISE SPECIFIED		CONTRACT NUMBER		TIKISPRINTER	
ALL DIM ARE IN INCHES	TOL	.XX	: .010	DRAWN		Electrical Schematic	
		.XXX	: .005	CHECK		SIZE	DWG NO.
		ANGLE	: 2°	ENGR		REGISTRATION NO.-DD-MM-YYYY-SEQ NO	
INTERPRET DRAWING PER 000-STD-100. BREAK ALL SHARP EDGES				MFG		SCALE	1/1
				QA		WT.	NA
				APPD		SHEET	X OF Y
				CAGE CODE			

REVISIONS				
ZONE	REV	DESCRIPTION	DATE	APPROVED

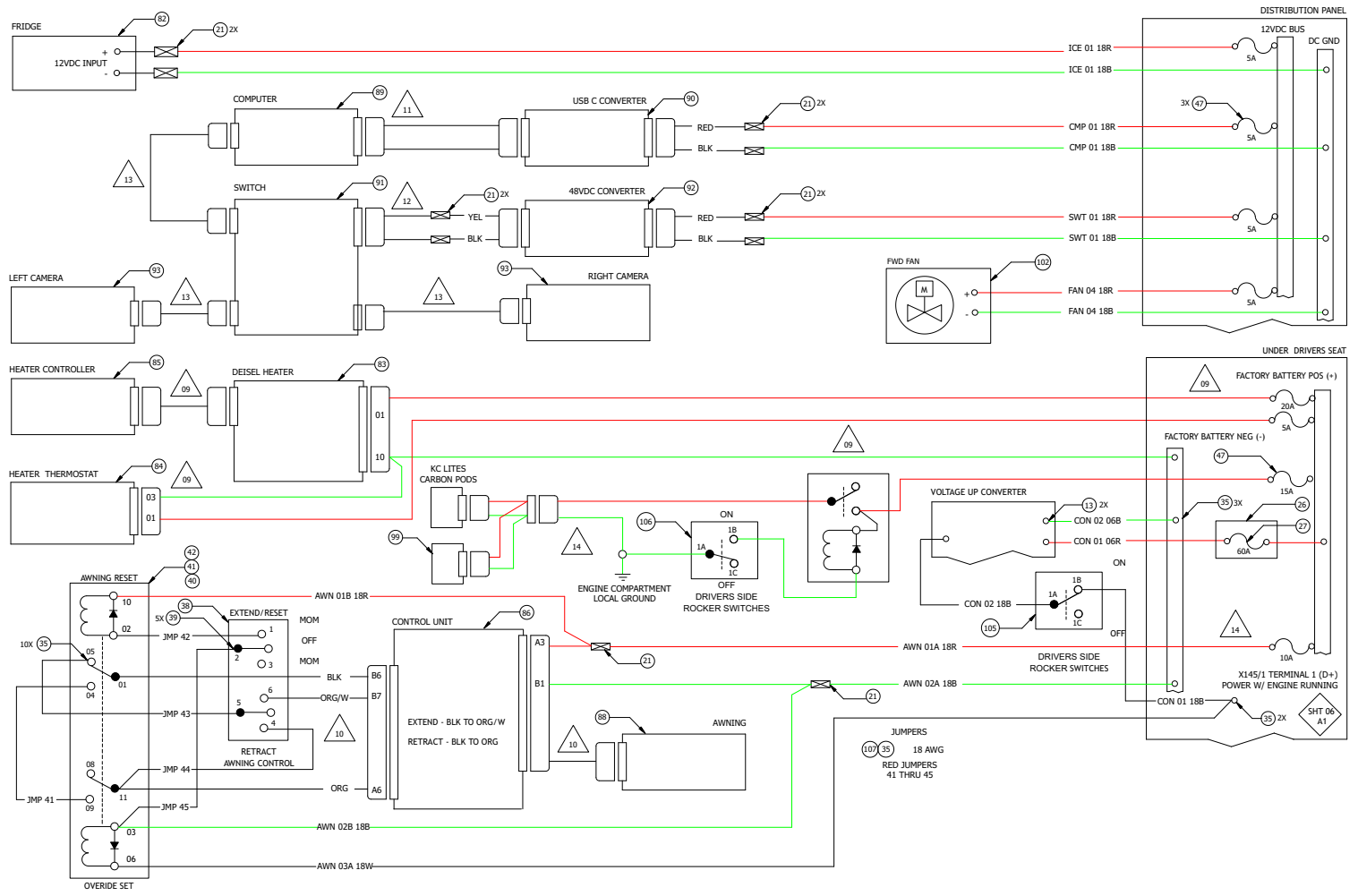


N/A	DWG FILE NAME LOCATION
DASH NO.	USED ON
APPLICATION	

MATERIAL	UNLESS OTHERWISE SPECIFIED			CONTRACT NUMBER		TIKISPRINTER
	ALL DIM. ARE IN INCHES	TOL	.XX : .010 .XXX : .005 ANGLE : 2°	DRAWN		
	INTERPRET DRAWING PER 000-STD-100. BREAK ALL SHARP EDGES			CHECK		
				ENGR		
				MTG		Electrical Schematic
				QA		
				APPD		
CAGE CODE:				SCALE	1/1	WT. NA
					SHEET	X OF Y

REGISTRATION NO.-DD-MM-YYYY-SEQ NO

REVISIONS				
ZONE	REV	DESCRIPTION	DATE	APPROVED



N/A	DWG FILE NAME LOCATION
DASH NO.	USED ON
	APPLICATION

MATERIAL	UNLESS OTHERWISE SPECIFIED				CONTRACT NUMBER		TIKISPRINTER	
	ALL DIM ARE IN INCHES	TOL	.XX : .010	DRAWN				Electrical Schematic
INTERPRET DRAWING PER ISO-5455:00 BREAK ALL SHARP EDGES		.XXX : .005	CHECK					
		ANGLE : 2°	ENGR					
			DRWG NO.					
			REGISTRATION NO.-DD-MM-YYYY-SEQ NO					
			SIZE	A				
		SCALE	1/1	WT.	NA	SHEET	X OF Y	

D

C

B

A

D

C

B

A

REGISTRATION NO.-DD-MM-YYYY-SEQ NO

DWG NO.

4

3

2

1

4

3

2

1